

Nokia Customer Care

6(a) - Baseband Troubleshooting Instructions

[This page intentionally blank]

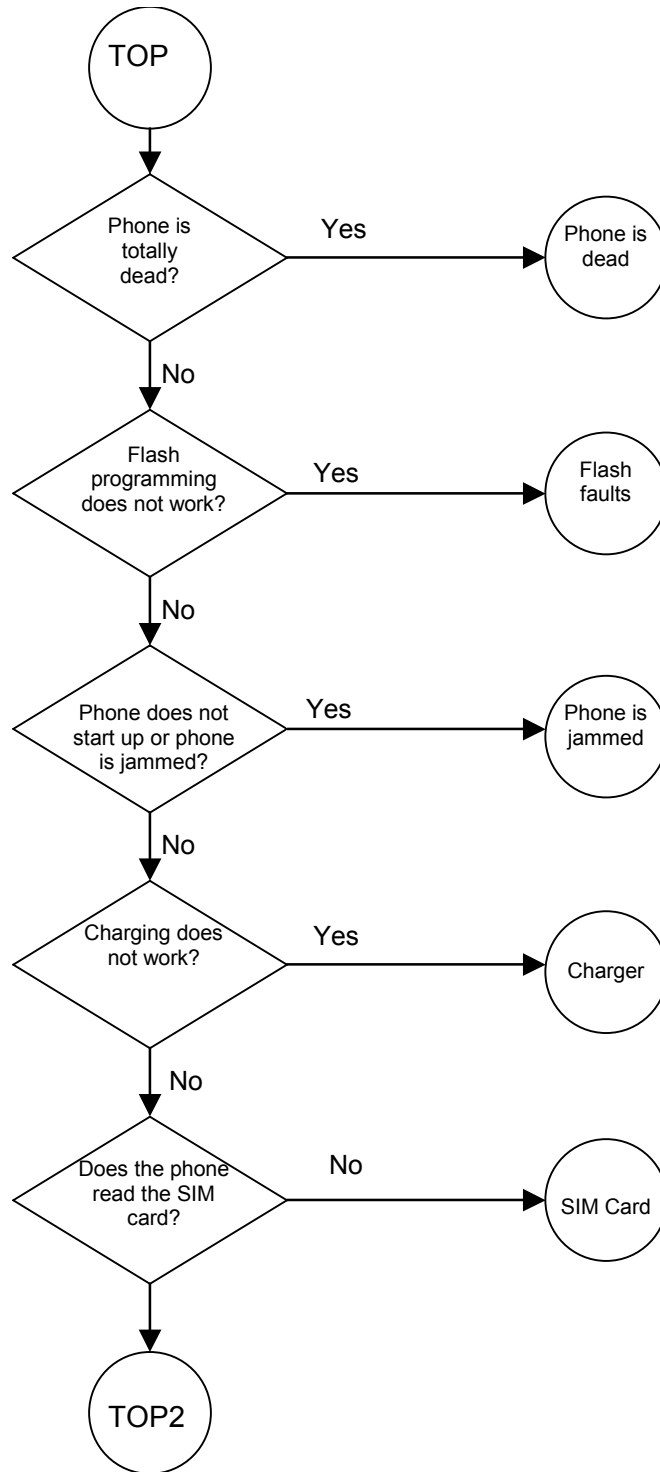
Table of Contents

	Page No
Test Points	5
Troubleshooting	6
Top level flow 1	6
Top level flow 2	7
Phone is dead 1	8
Phone is dead 2	9
Flash faults 1	10
Flash faults 2	11
Phone is jammed 1	12
Phone is jammed 2	14
Charger	15
SIM Card	16
Audio faults 1	17
Audio faults 2	18
Audio faults 3	19
Audio faults 4	20
Earpiece	21
Display faults 1	22
Display faults 2	23
Keypad faults 1	24
Keypad faults 2	25
Camera faults 1	26
Camera faults 2	27
Self test	28
FM radio 1	29
FM radio 2	30

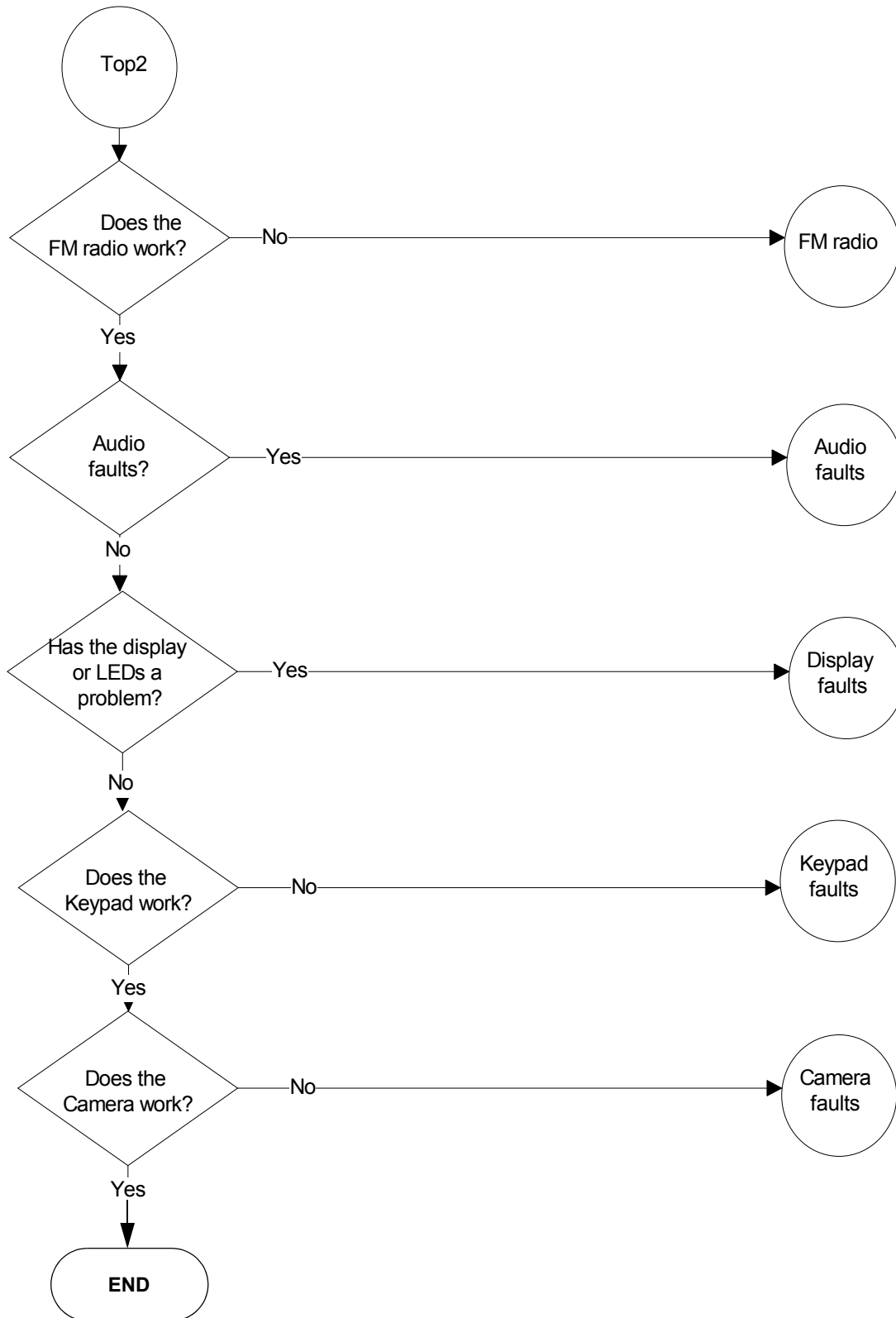
[This page intentionally blank]

Troubleshooting

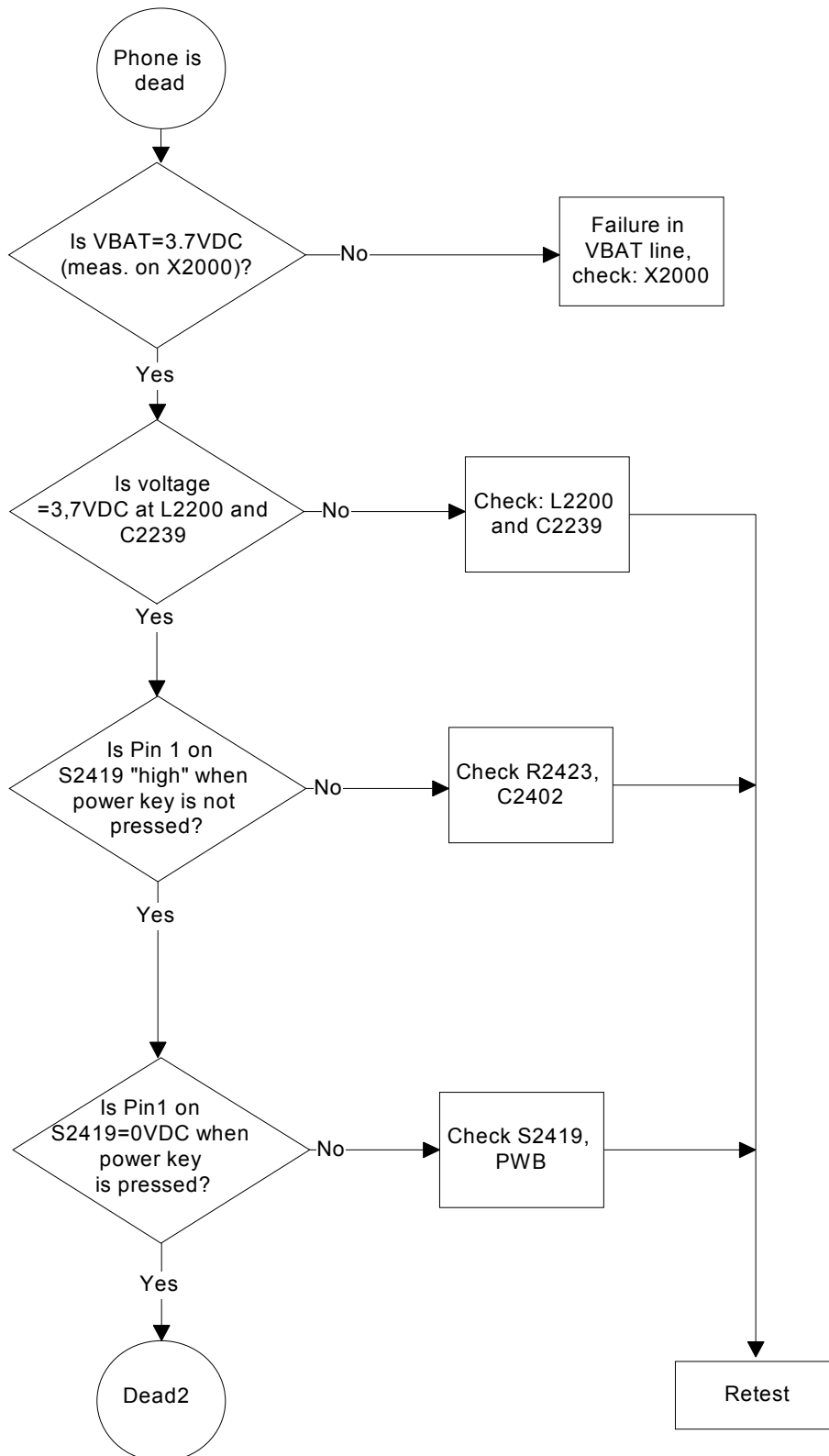
■ Top level flow 1



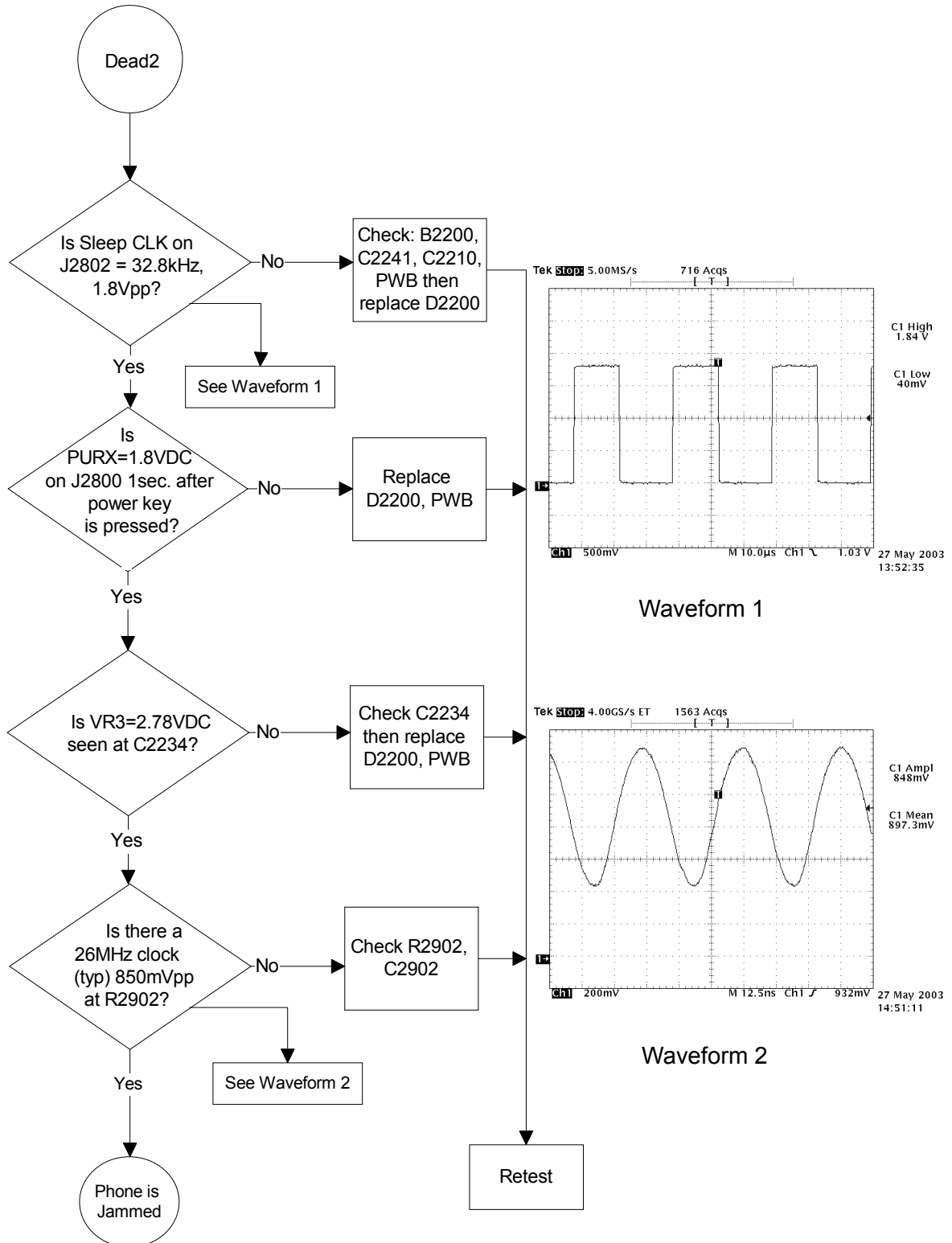
■ **Top level flow 2**



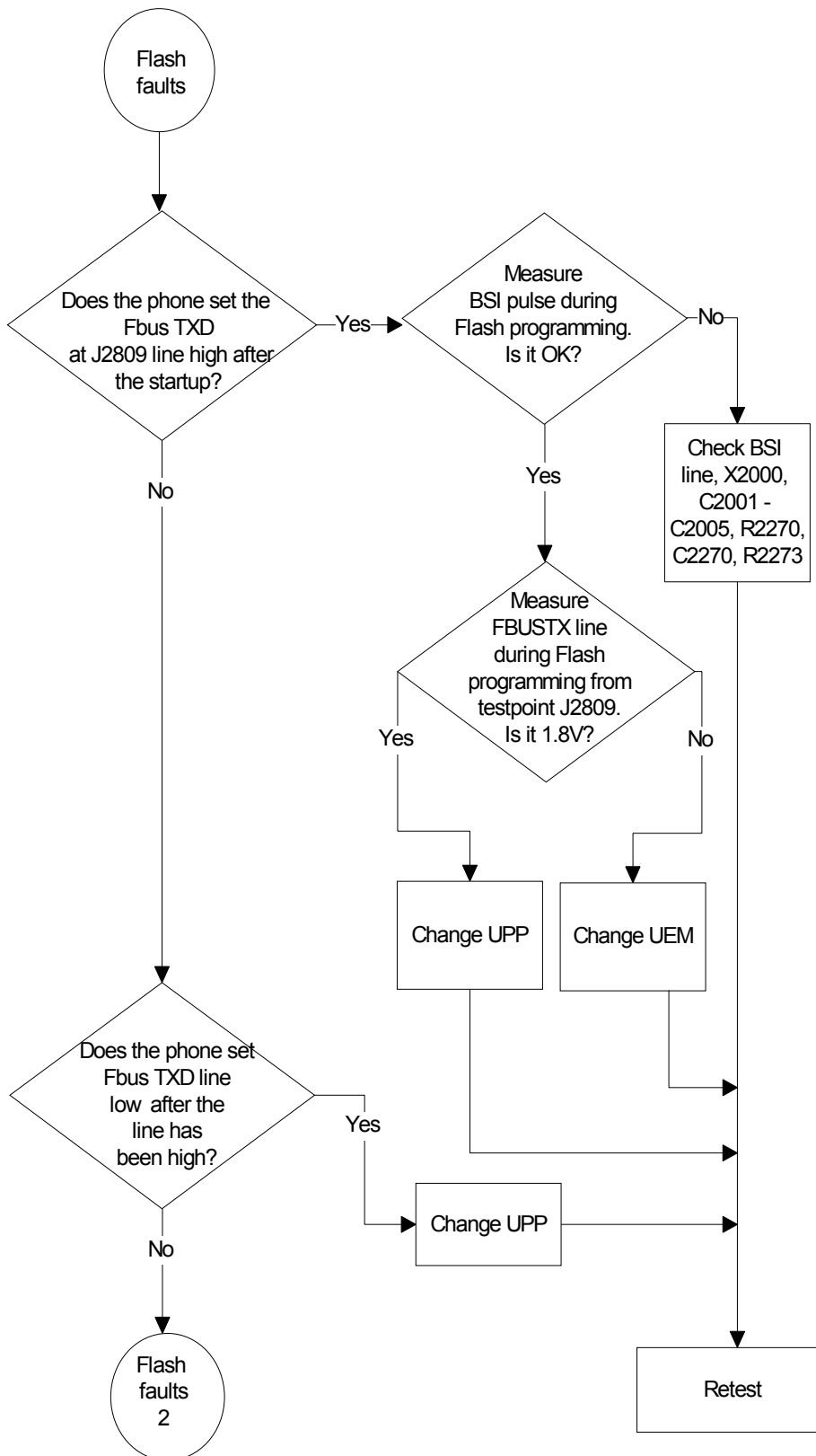
■ Phone is dead 1



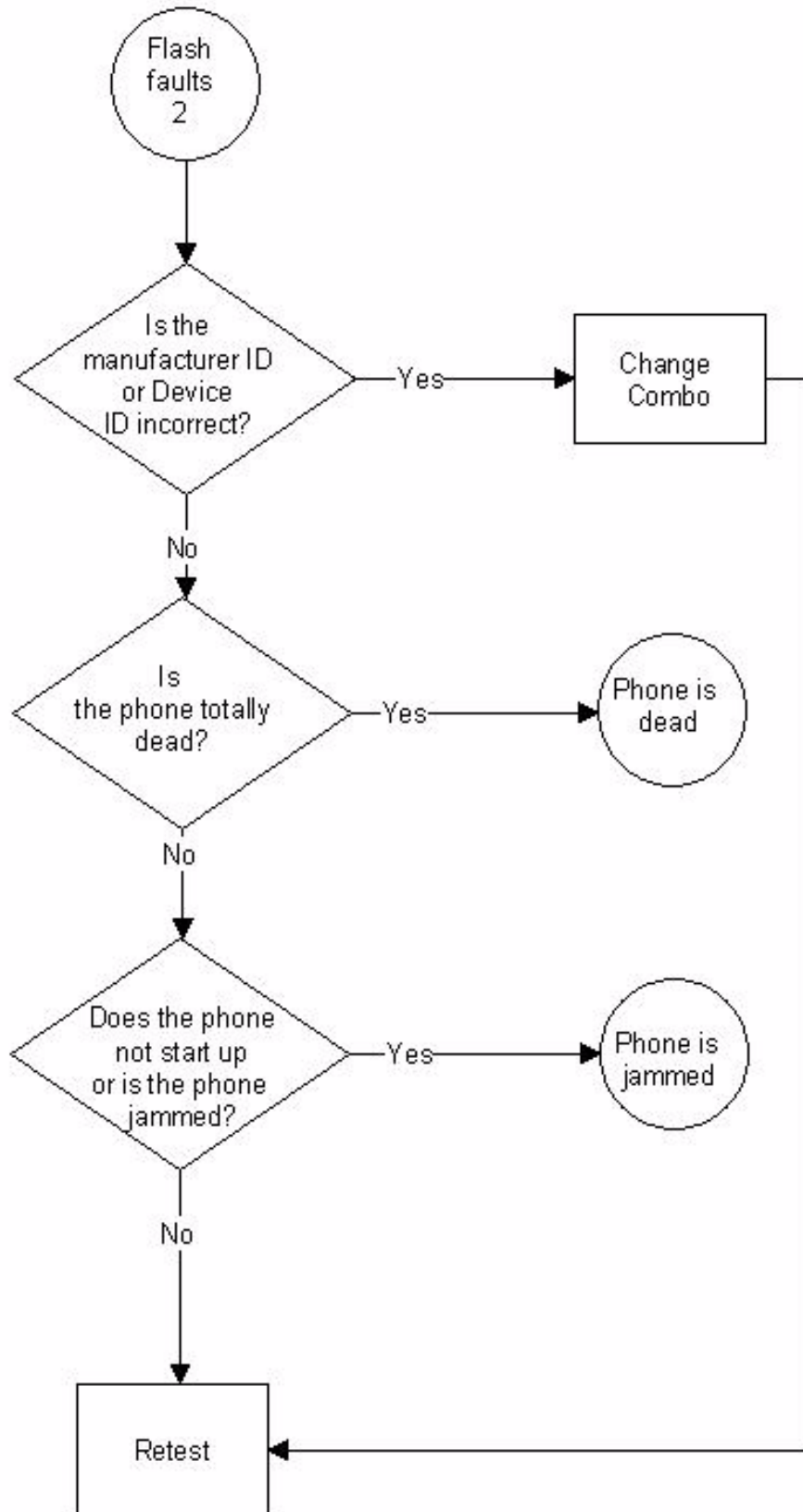
■ Phone is dead 2



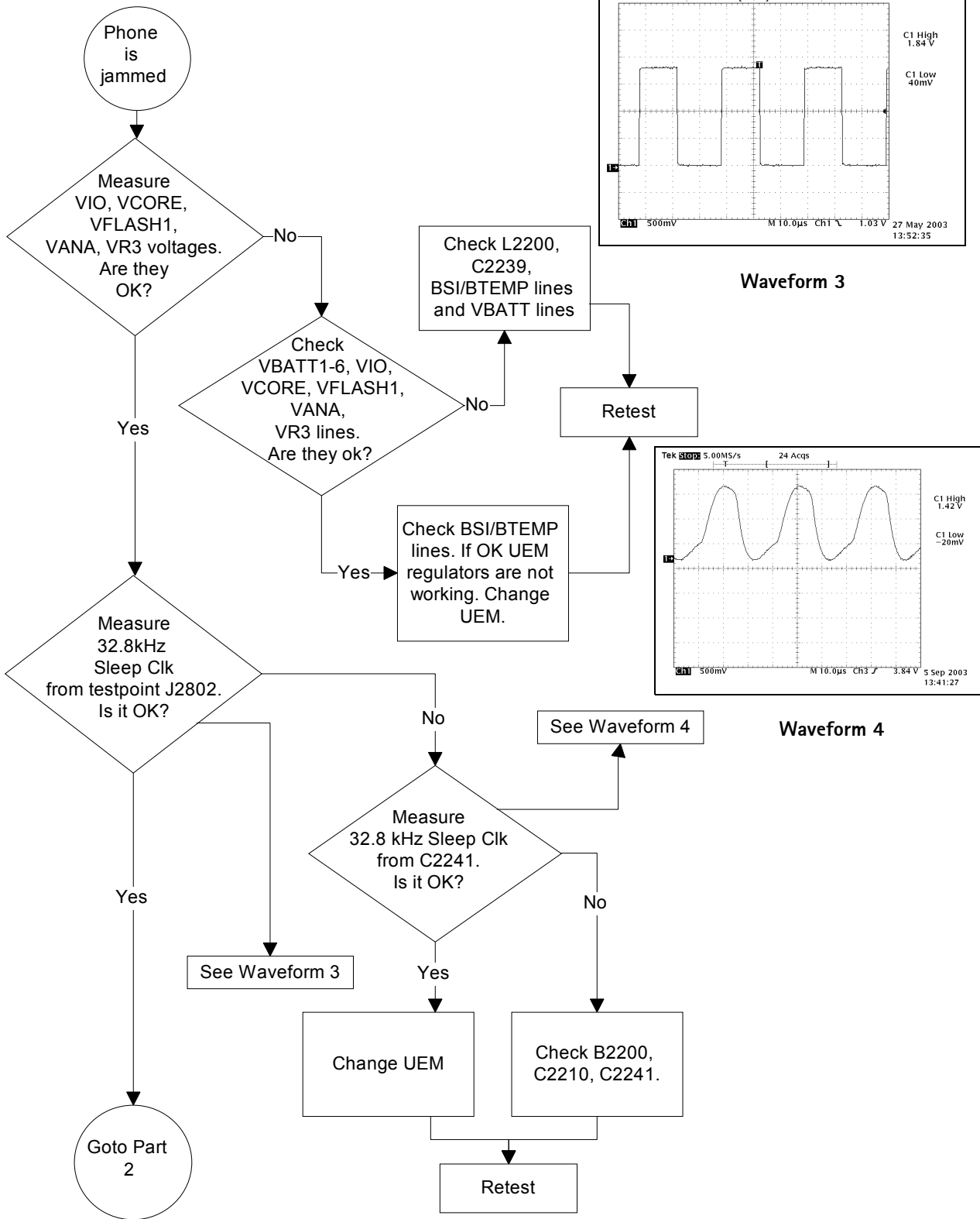
■ Flash faults 1

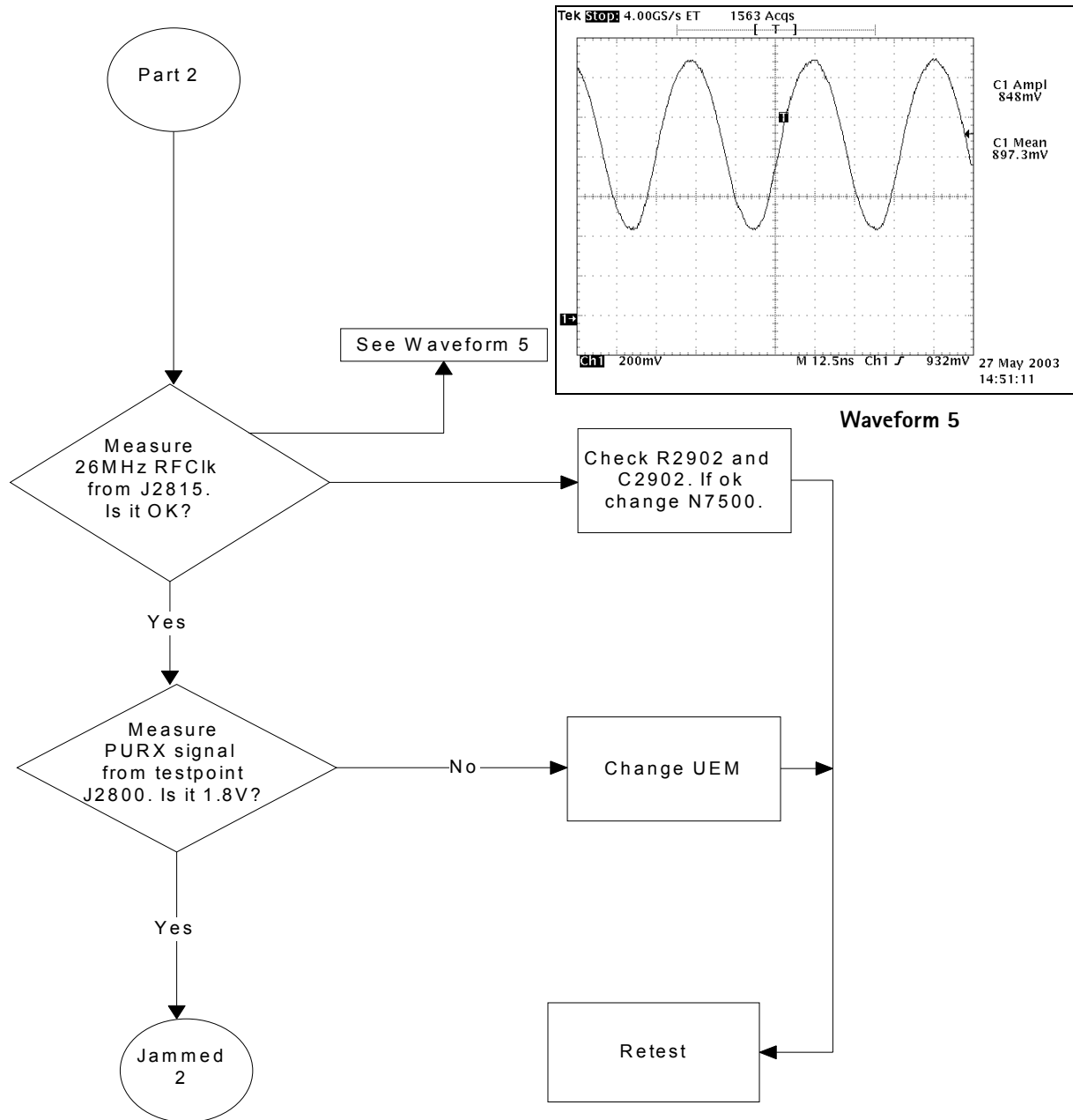


■ **Flash faults 2**

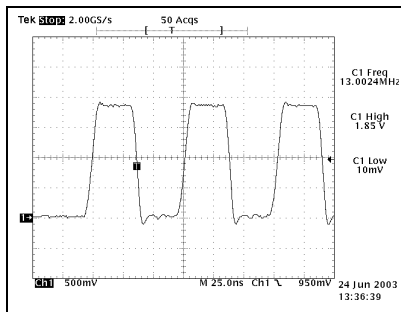
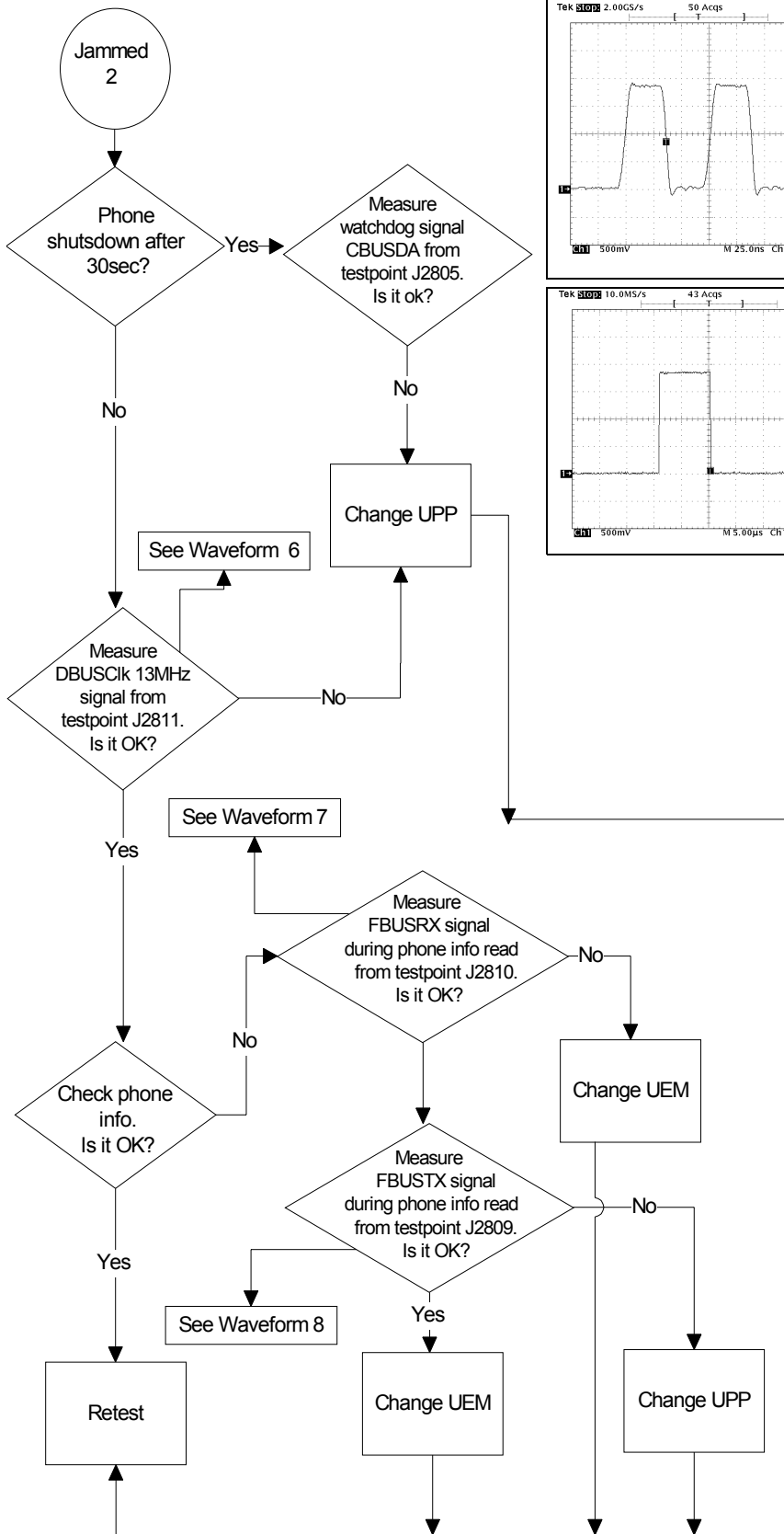


■ Phone is jammed 1

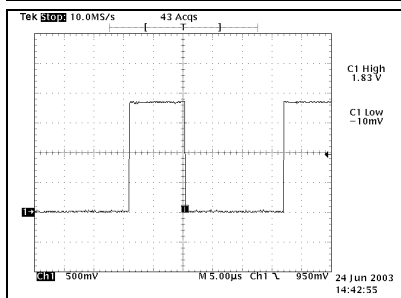




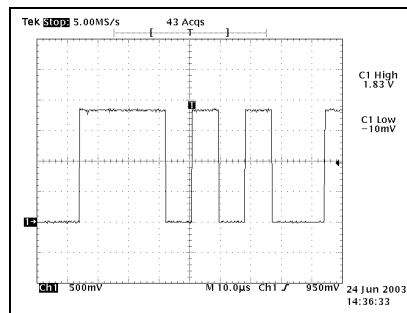
■ Phone is jammed 2



Waveform 6

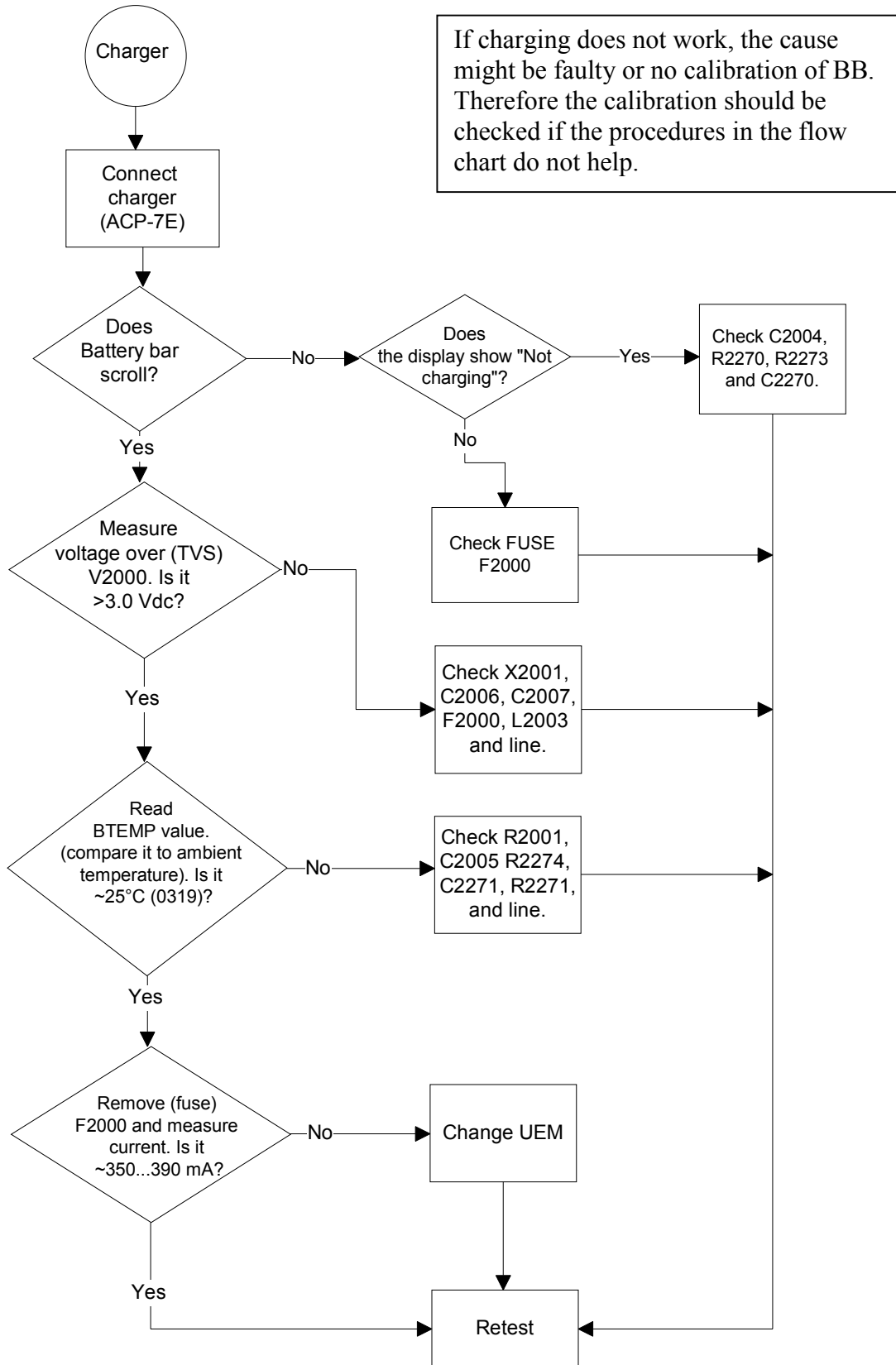


Waveform 7

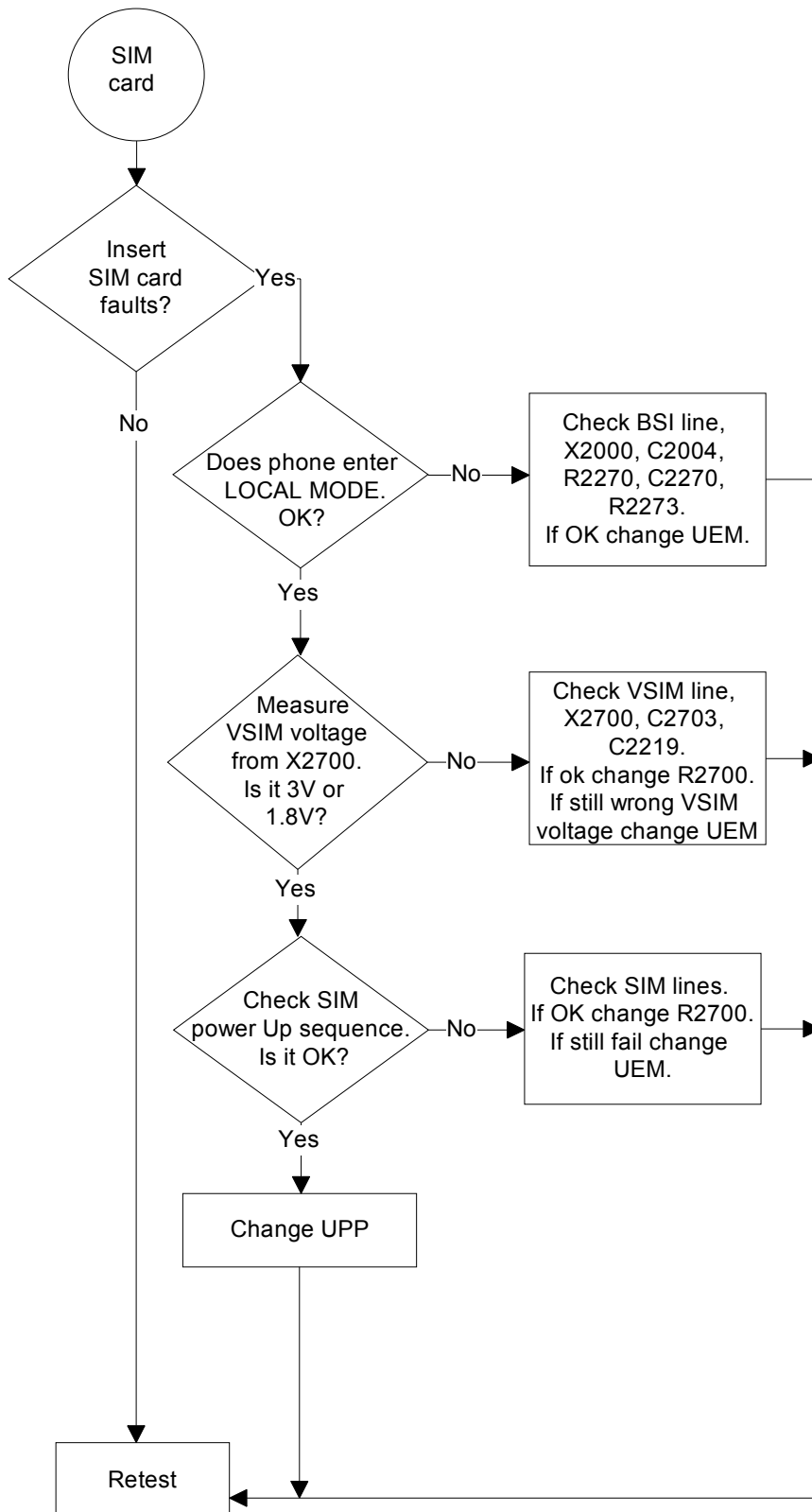


Waveform 8

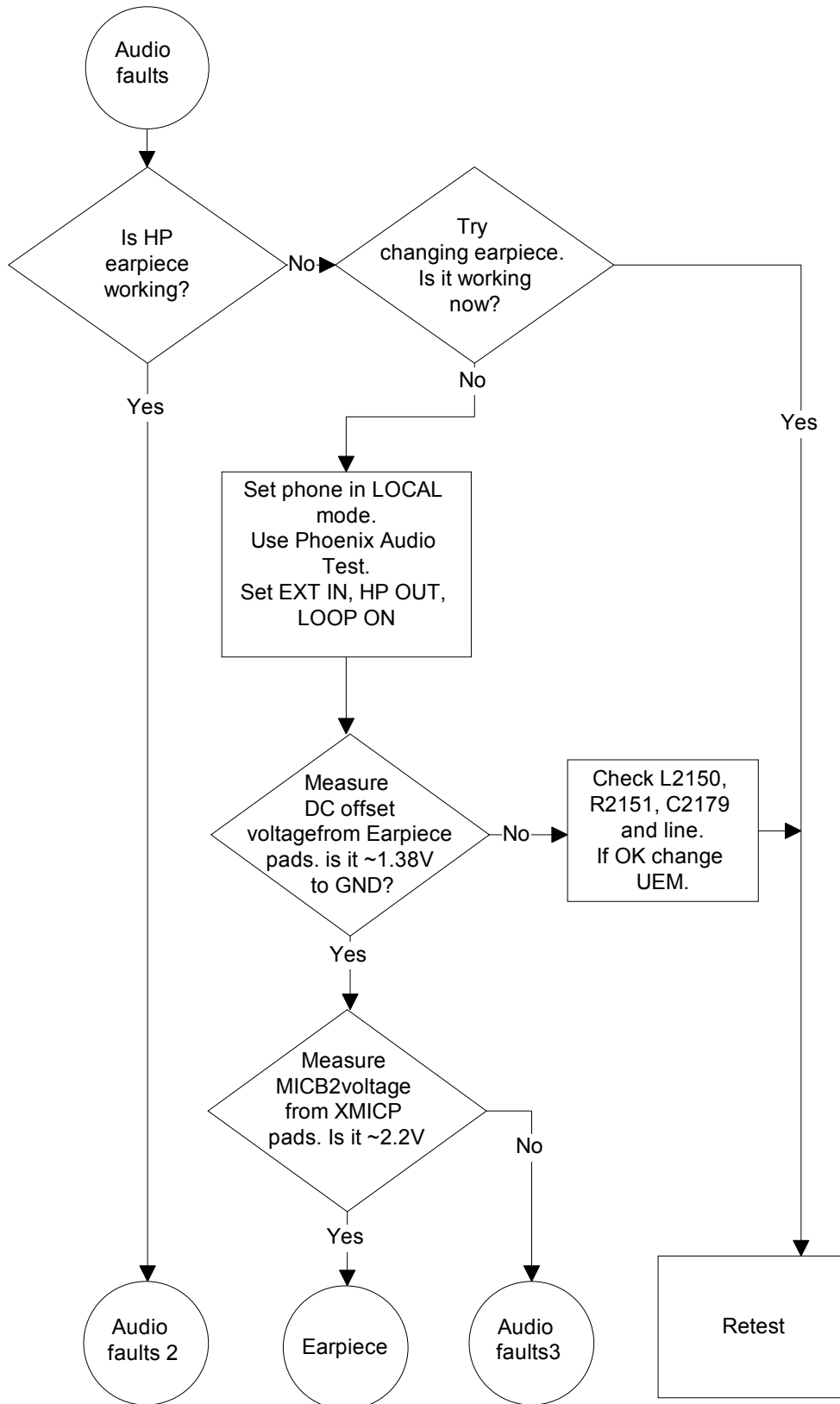
■ **Charger**



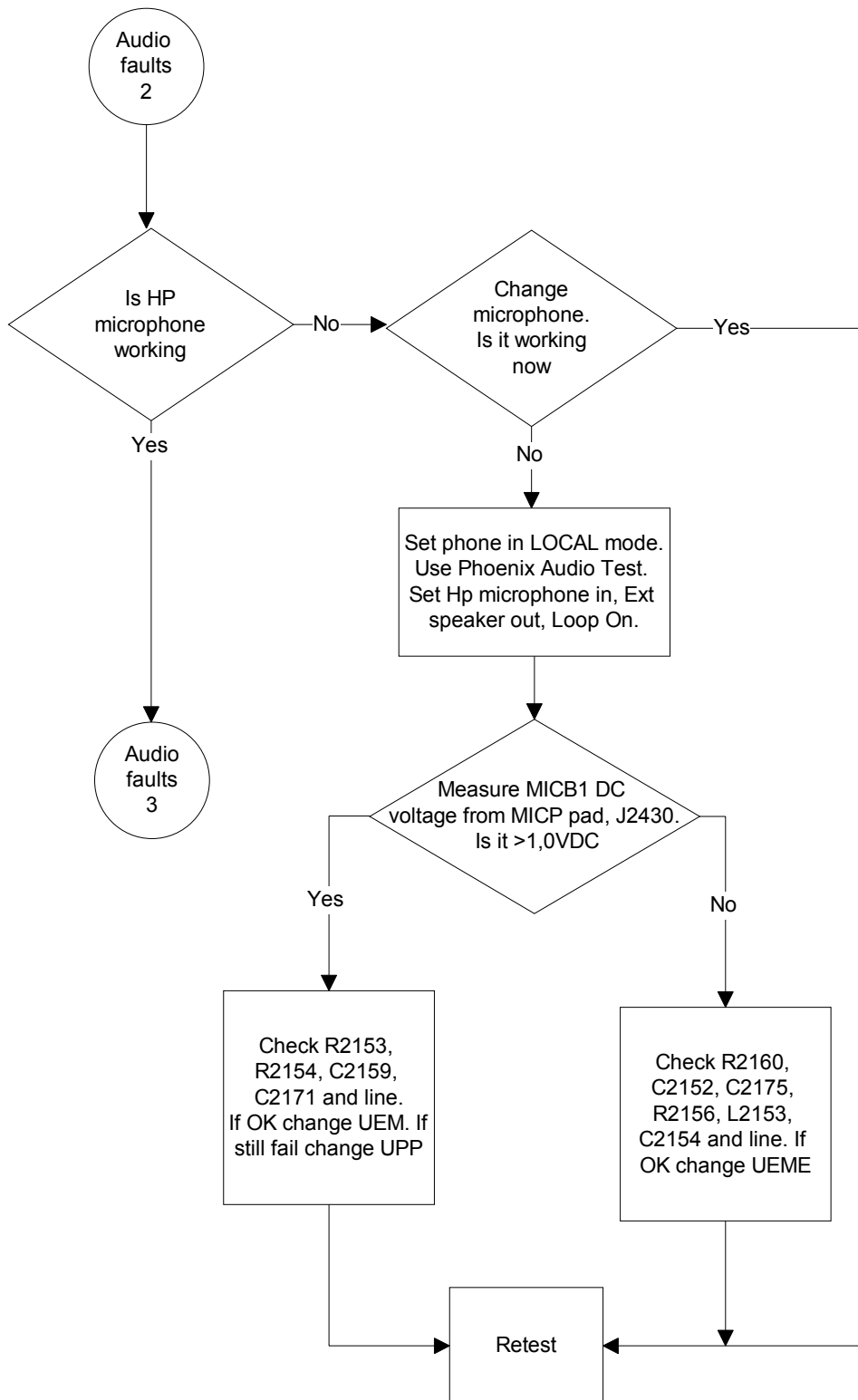
■ **SIM Card**



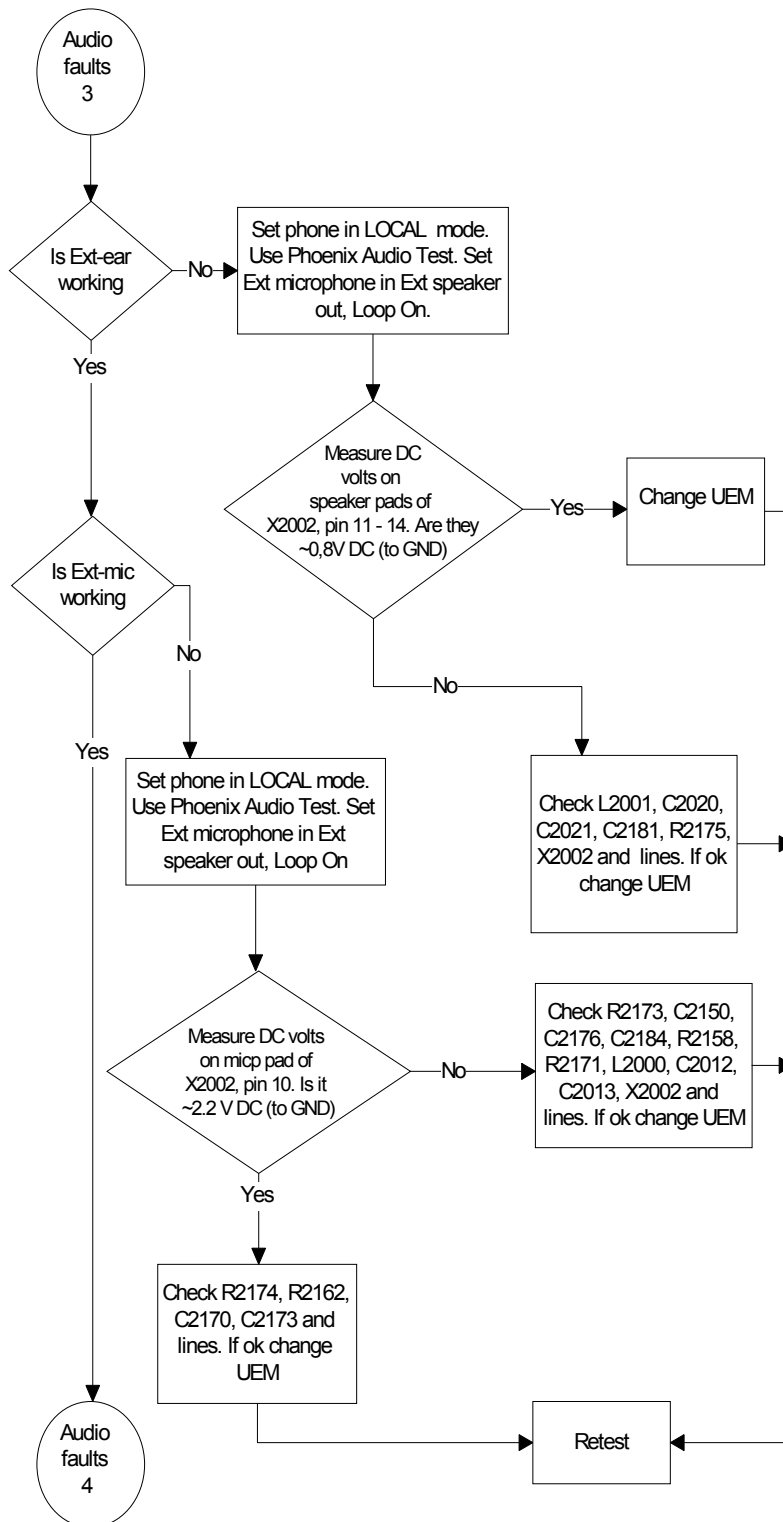
■ **Audio faults 1**



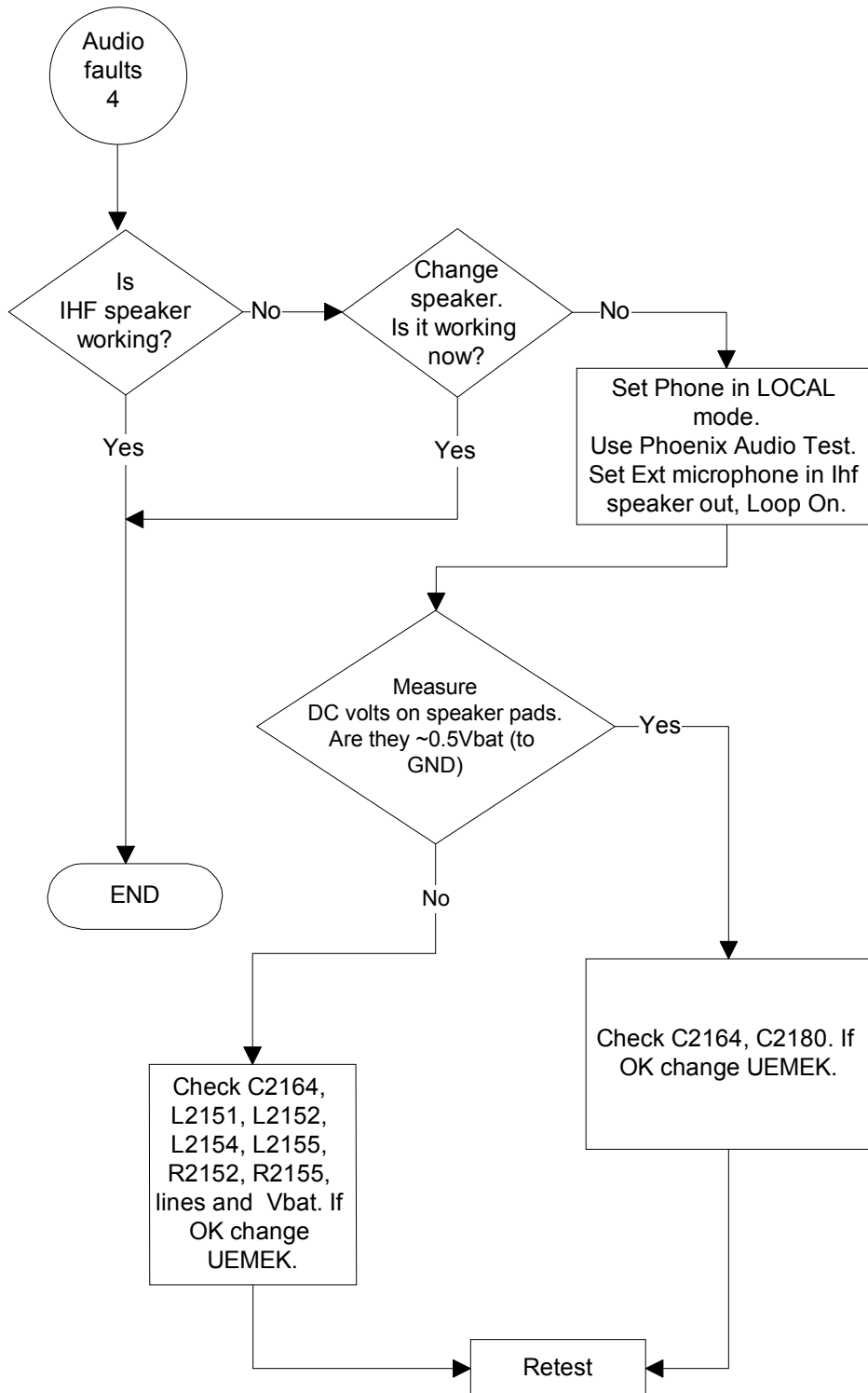
■ **Audio faults 2**



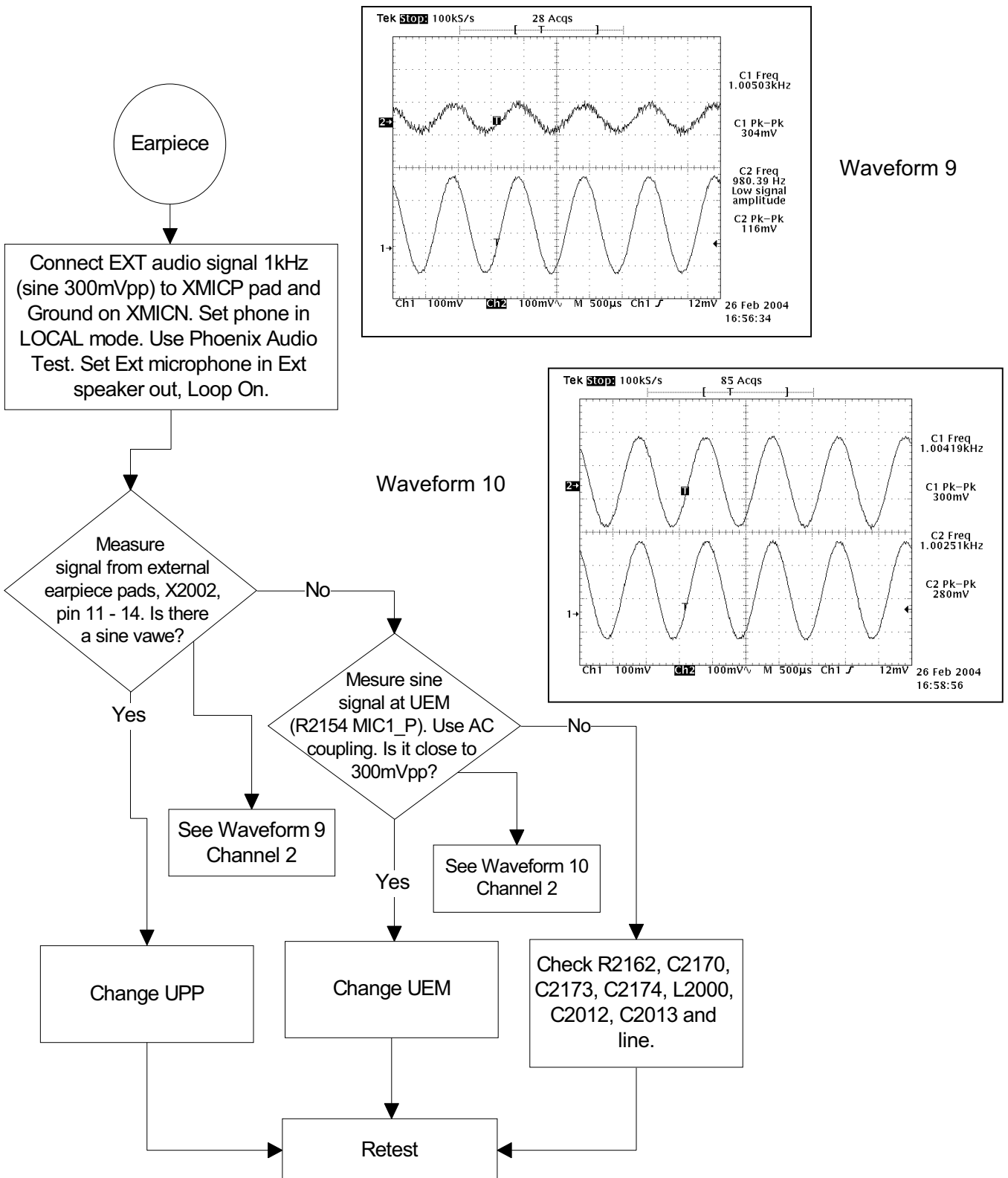
■ **Audio faults 3**



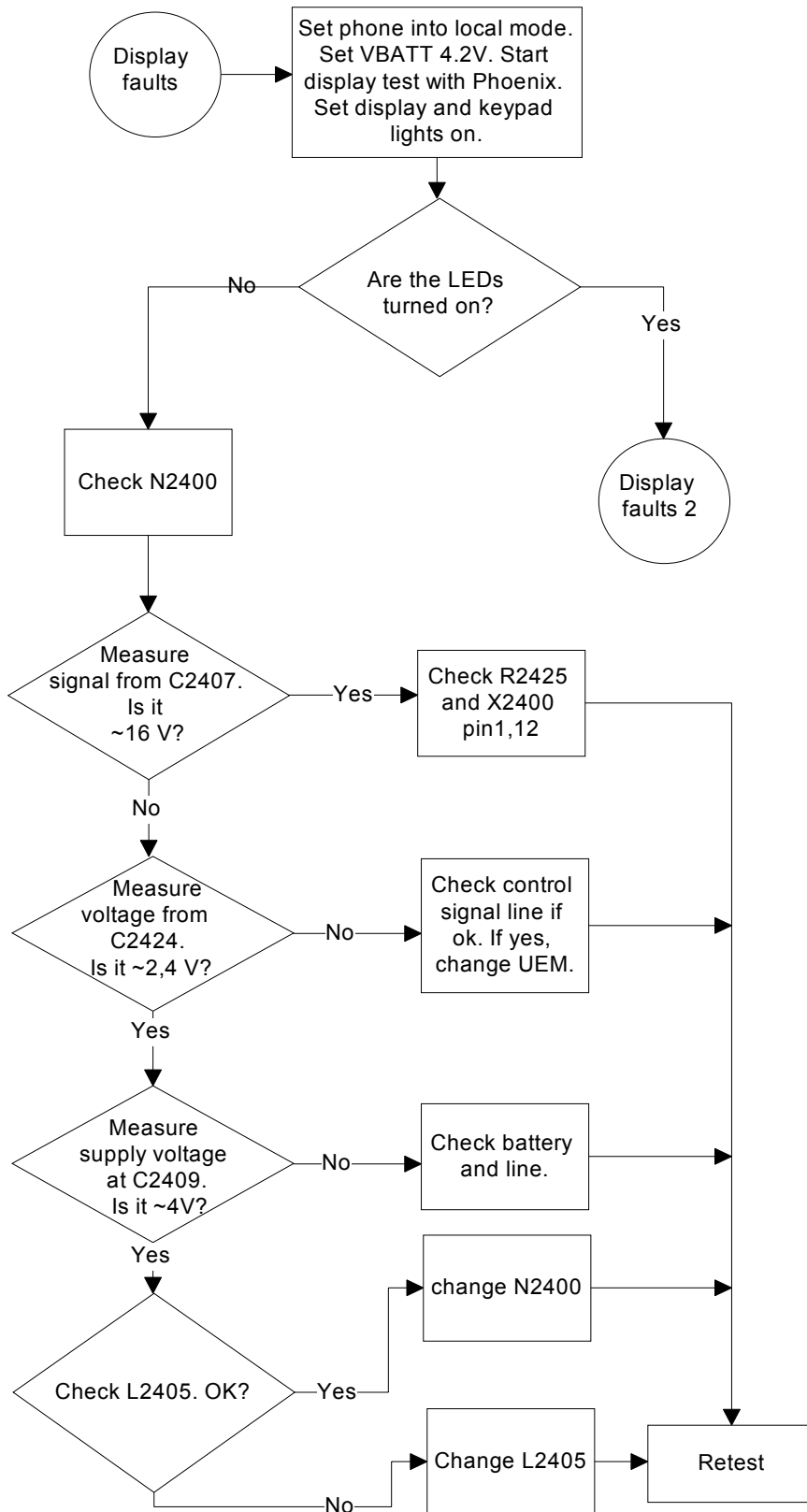
■ **Audio faults 4**



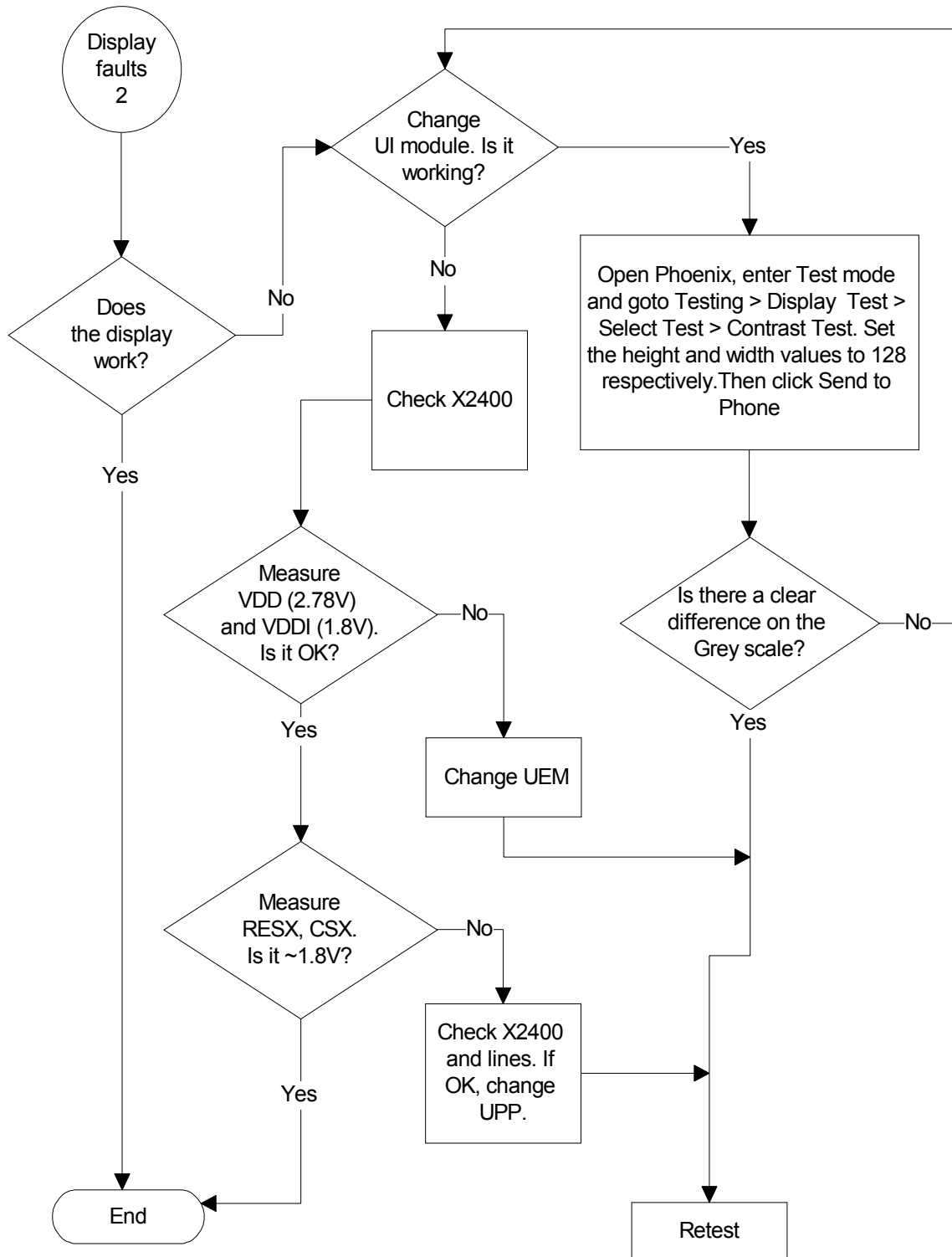
■ **Earpiece**



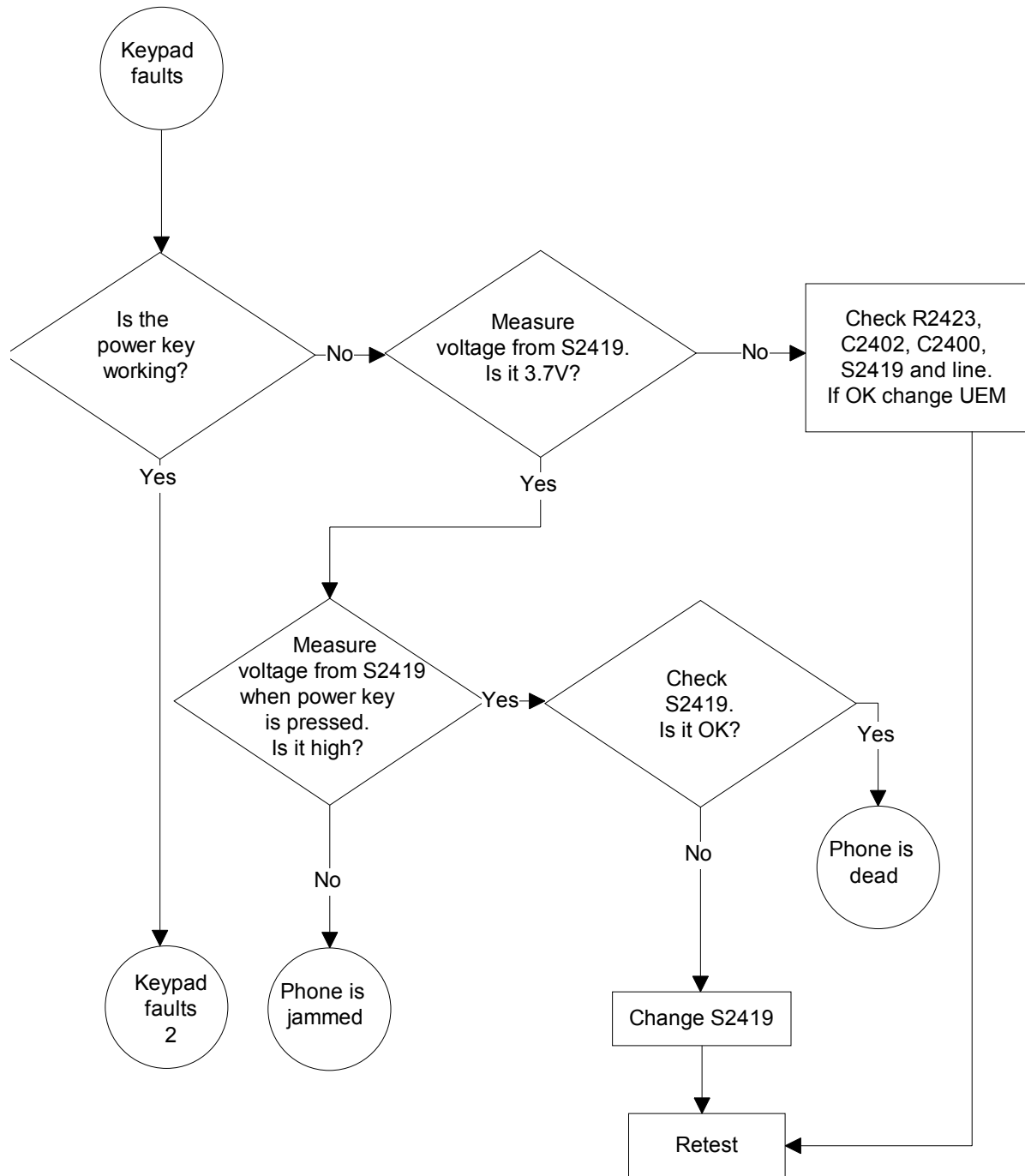
■ **Display faults 1**



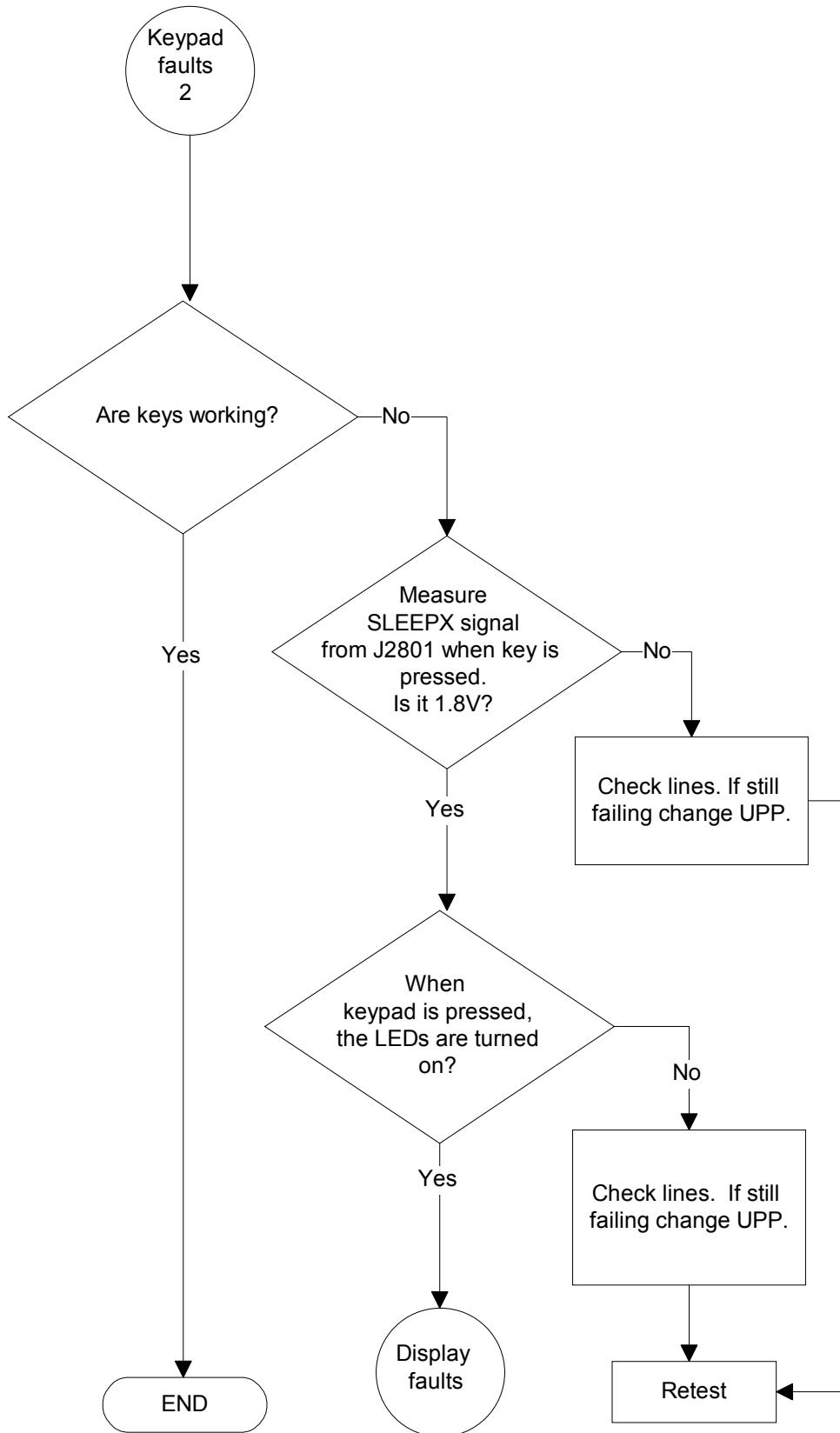
■ **Display faults 2**



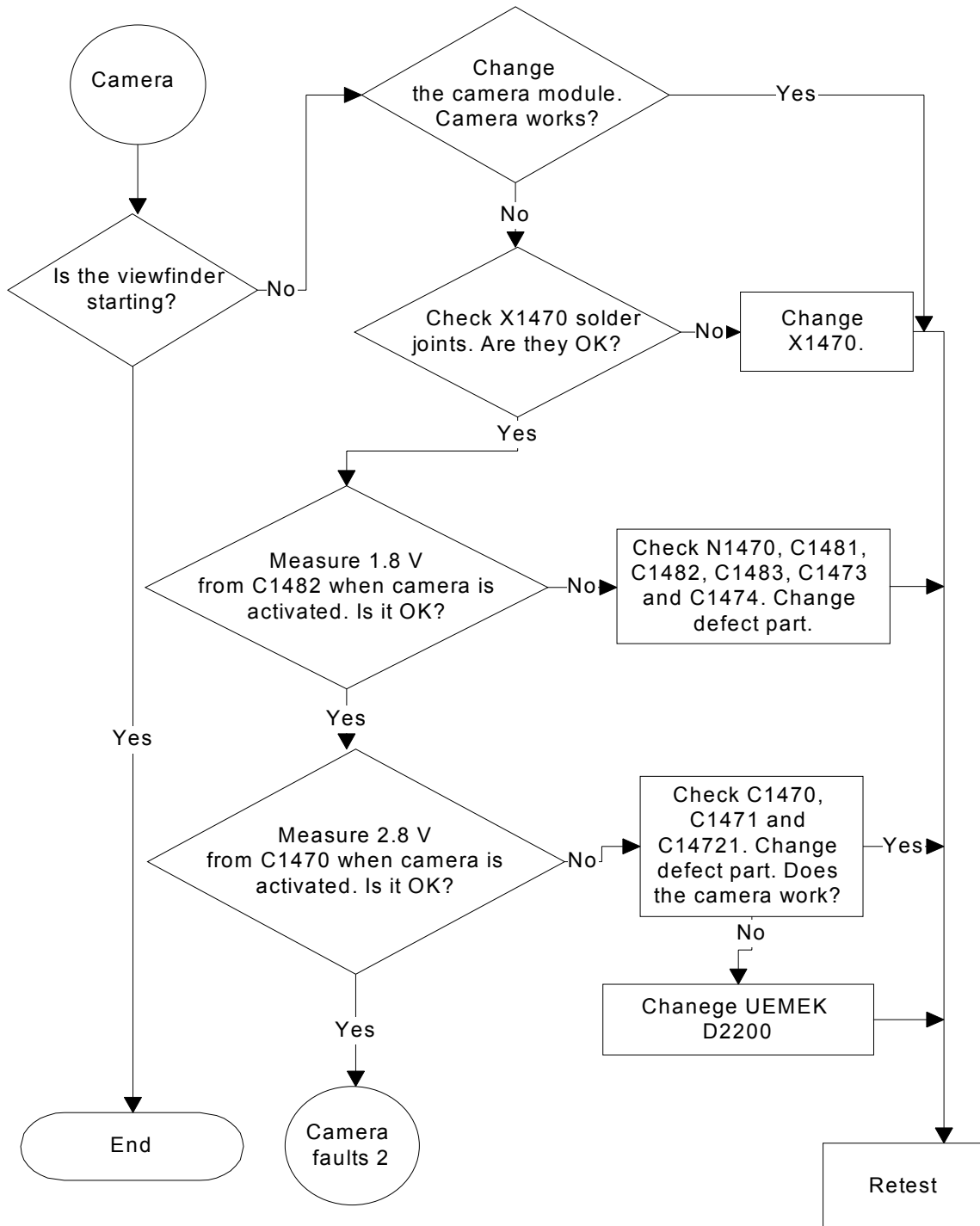
■ Keypad faults 1



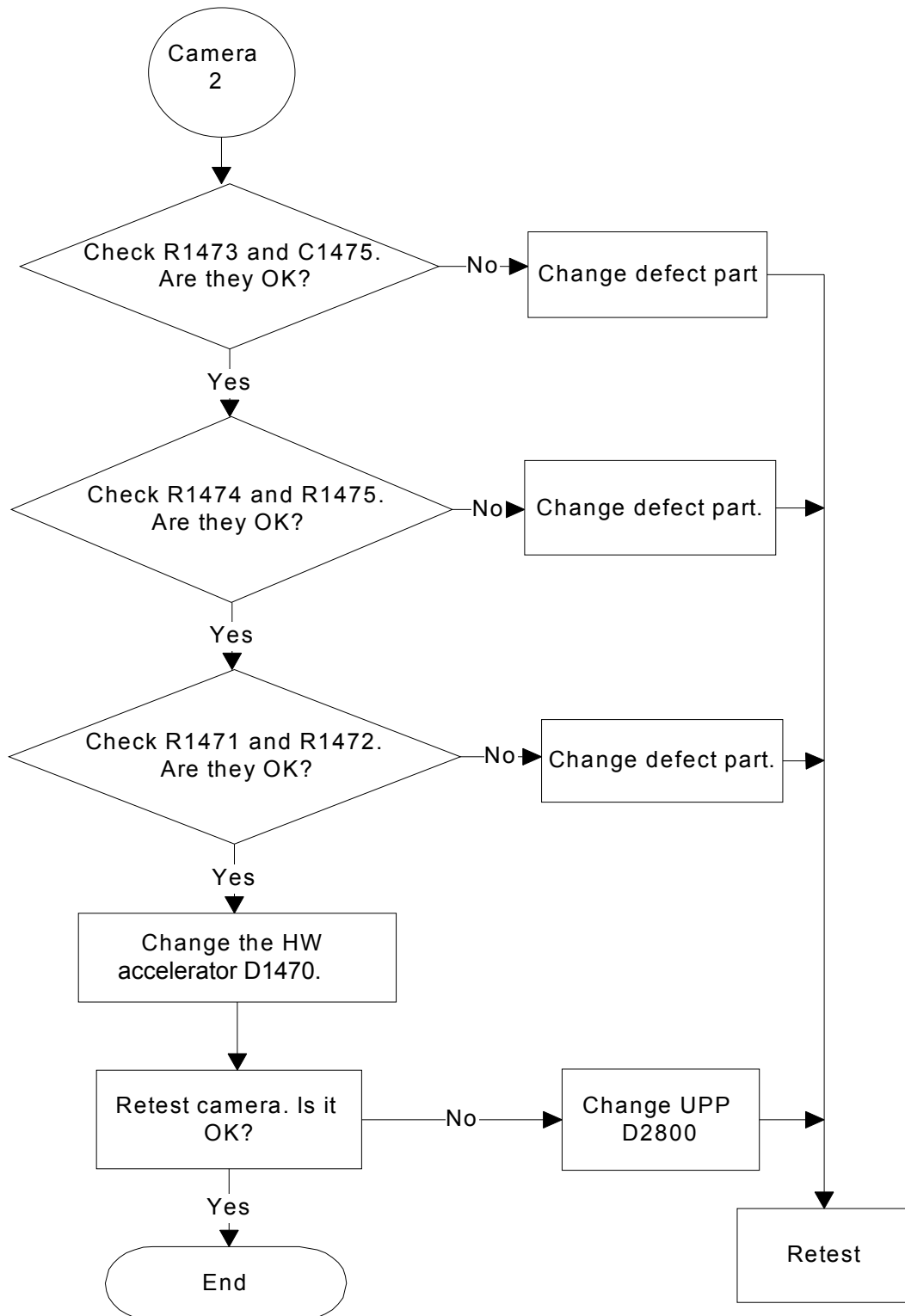
■ **Keypad faults 2**



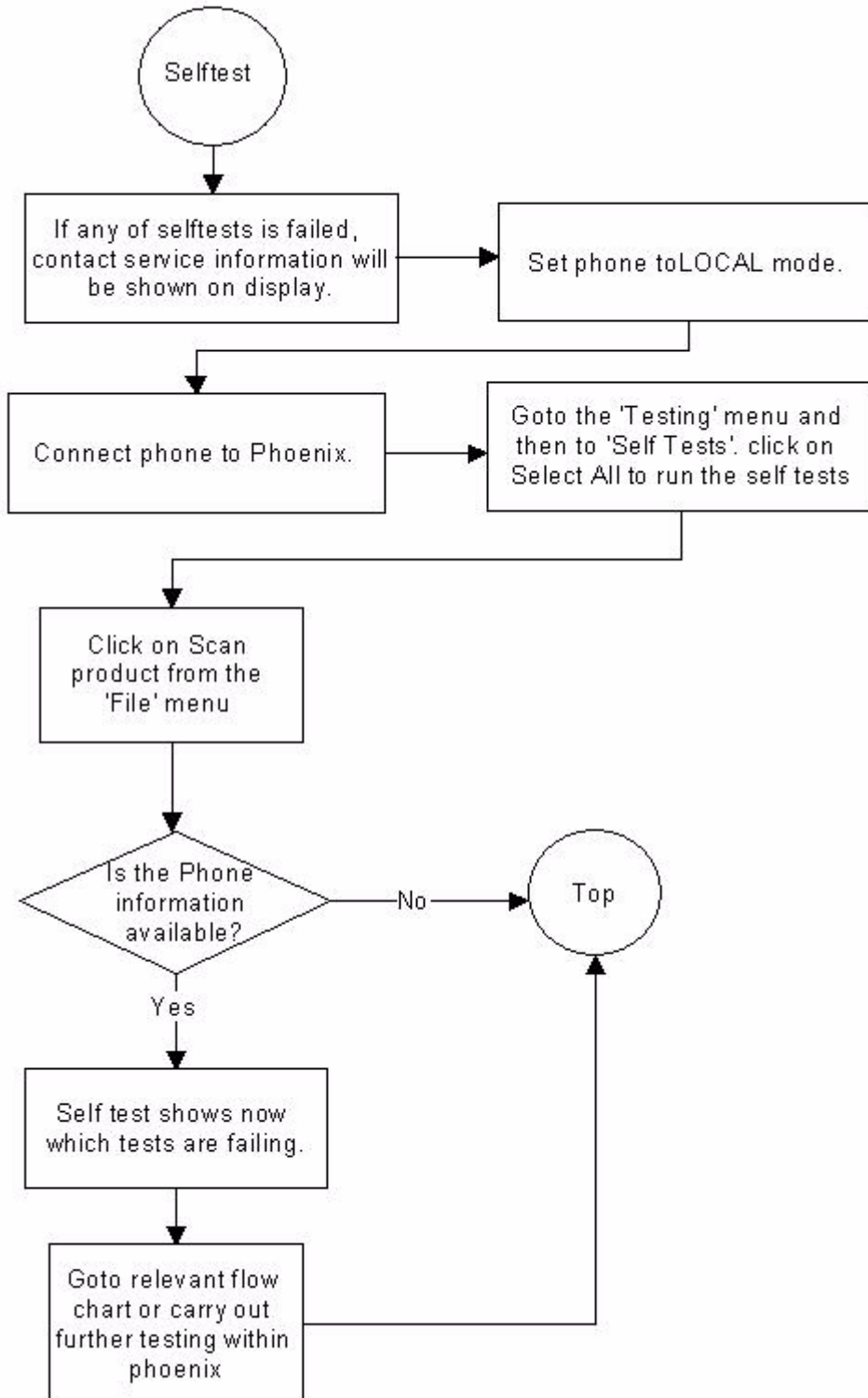
■ Camera faults 1



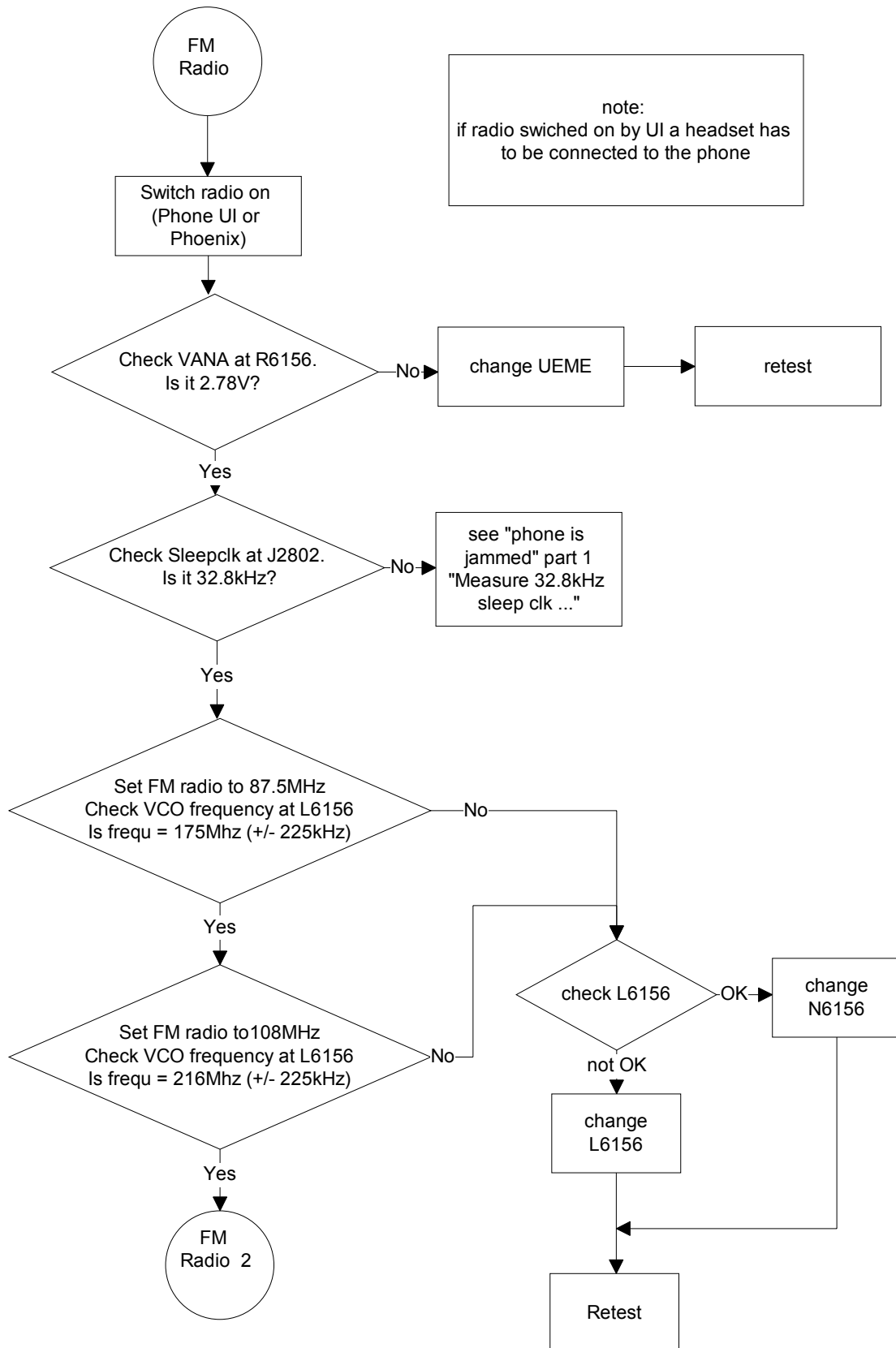
■ **Camera faults 2**



■ **Self test**



■ **FM radio 1**



■ **FM radio 2**

